

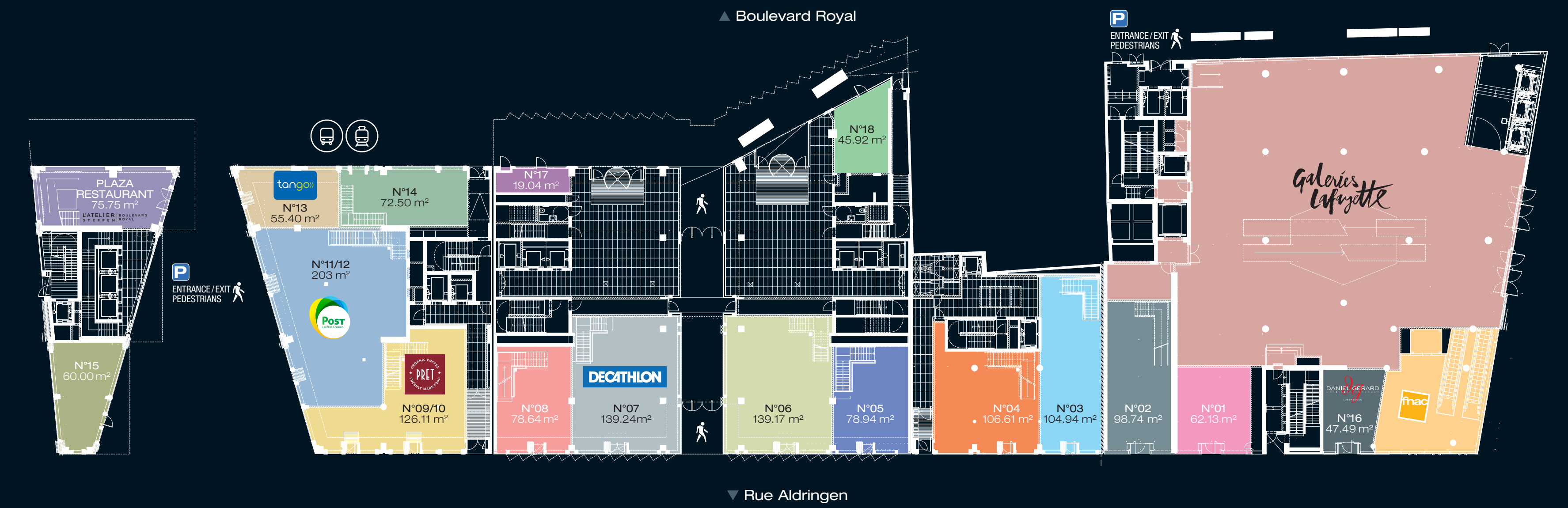
In the heart of Europe, in the heart of Luxembourg,
in the heart of all Luxembourgers

ROYAL · HAMILIUS



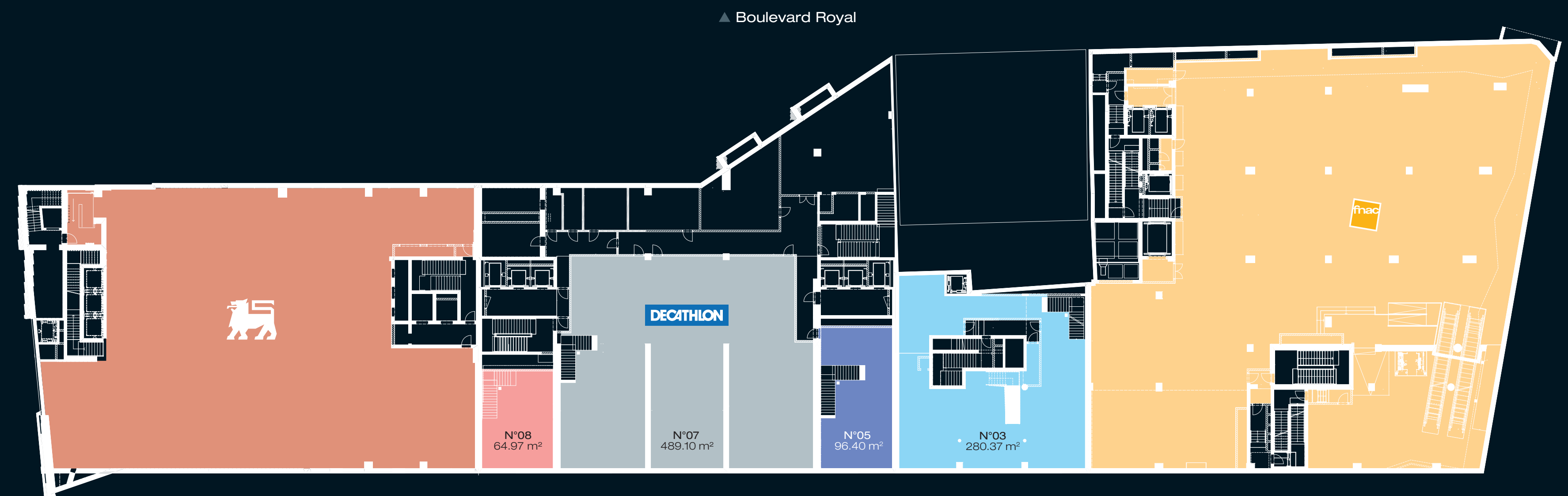
Scale 1.613

MEZZANINE



Scale 1.613

GROUND FLOOR



Scale 1.613

LOWER GROUND FLOOR



COMMERCIAL SURFACE NUMBER	LONG FACADE GROUND FLOOR	TOTAL
N° 01	8.75 m	62.13 m ²
N° 02	6.75 m	212.95 m ²
N° 03	5.905 m	385.31 m ²
N° 04	10.23 m	293.21 m ²
N° 05	7.48 m	175.34 m ²
N° 06	25 m	341.99 m ²
N° 08	7.48 m	345.30 m ²
N° 14	12.355 m	159.45 m ²
N° 15	24.175 m	60.00 m ²
N° 17	7.48 m	19.04 m ²
N° 18	6.90 m	45.92 m ²

Contact

INOWAI
PROPERTY PARTNERS

Fathia Hamidi
fhamidi@inowai.com
Jean-Marie In
jmin@inowai.com
T +352 26 43 07 07
www.inowai.com

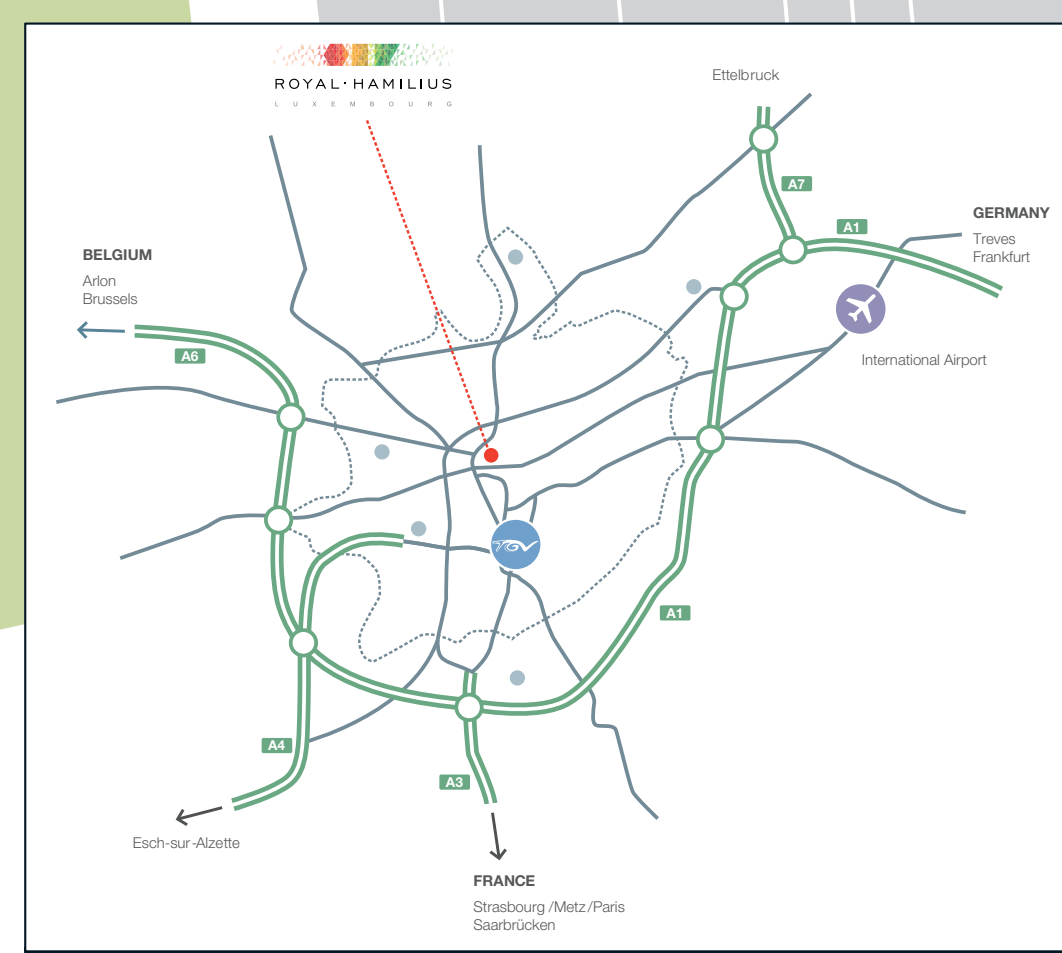
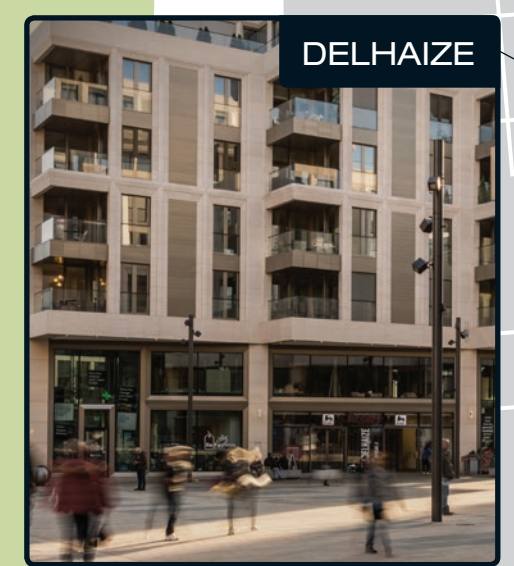
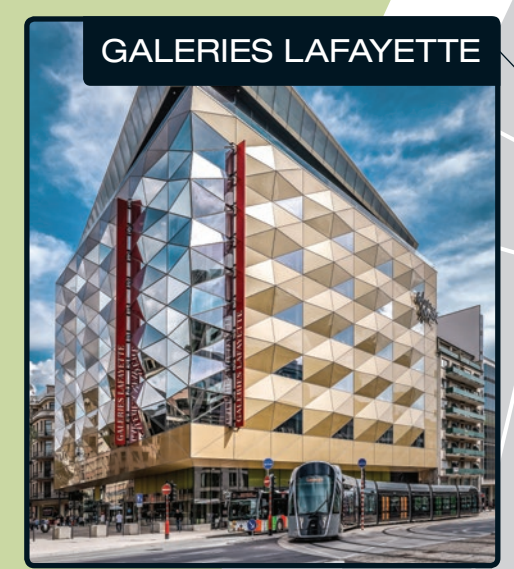
CBRE

Guillaume Pellegrino
guillaume.pellegrino@cbre.com
T +352 26 26 12 31
Audrey Chantereau
audrey.chantereau@cbre.com
T +352 26 26 12 05
www.cbre.lu

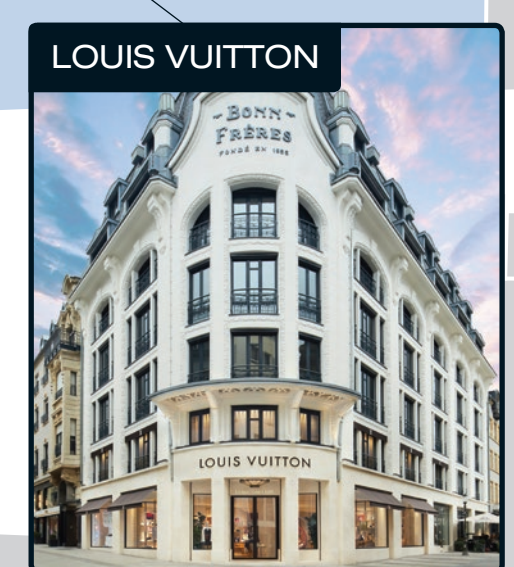
LUXEMBOURG-CITY

- Clothing
- Accessories
- Health & Beauty
- Food
- Home & Decoration
- Services
- Shoes
- Leisure & Sport
- Electro & Telecom
- Restaurant · Pub · Hotel
- Department Store
- Other

- Pedestrian zone
- ← Driving direction of cars



FOOTFALL ON SATURDAY	
Grand-Rue	22.756
Avenue de la Porte-Neuve	17.759
Rue Philippe II	10.000
NUMBER OF USERS	
Tramway (/day)	67.000
Parking (/month)	35.000



Bank of China SA

RAILWAY STATION

Boulevard F. D. Roosevelt

TOURIST BUS

GELLE FRA

Cathédrale Notre-Dame

