

RETAIL UNIT

17

# ROYAL · HAMILIUS

LONG FACADE  
GROUND FLOOR

7.48 m

TOTAL SURFACE

19.04 m<sup>2</sup>



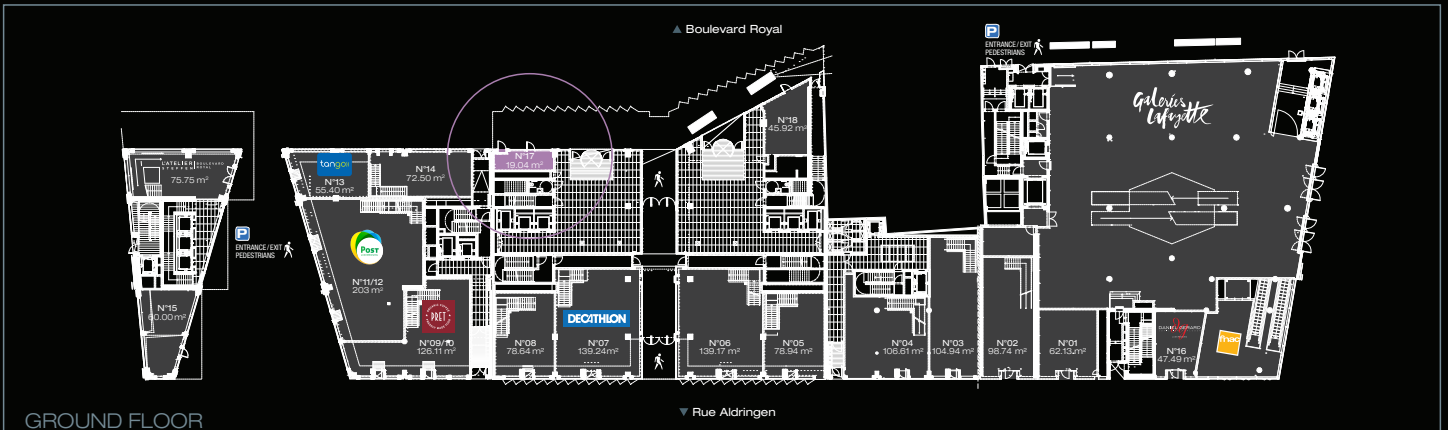
EXTERIOR VIEW



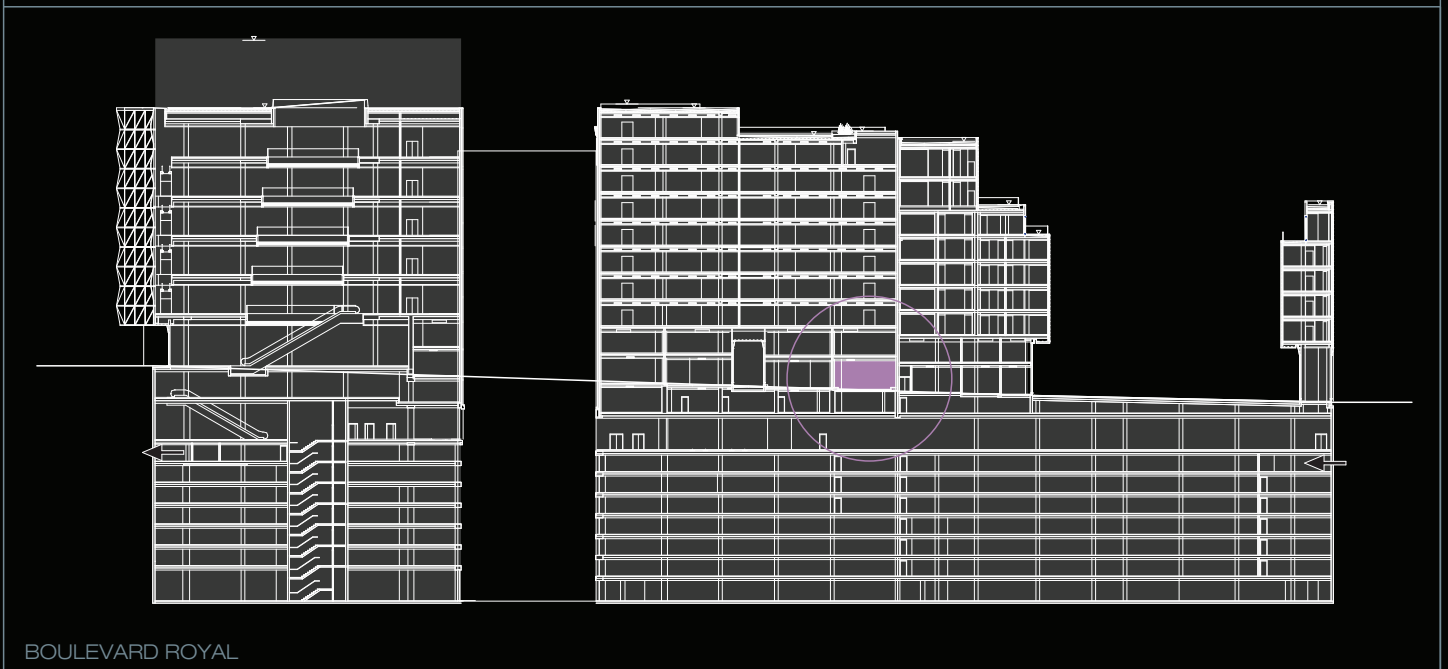
INTERIOR VIEW



INTERIOR VIEW



GROUND FLOOR

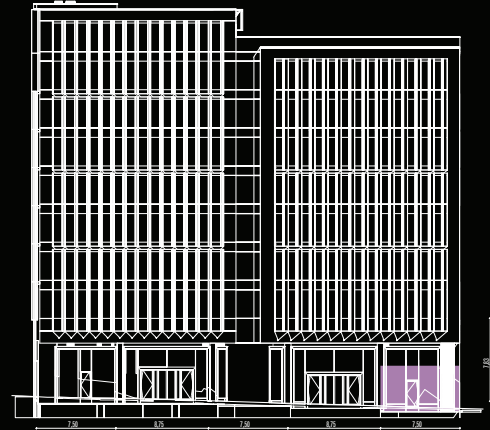


BOULEVARD ROYAL

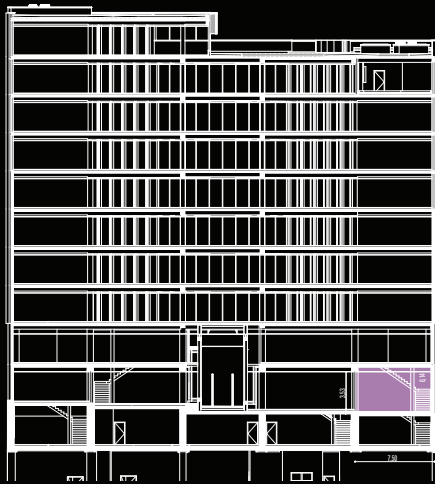




TRANSVERSAL SECTION



ELEVATION OF THE WEST FAÇADE



LONGITUDINAL SECTION



GROUND FLOOR



In the heart of Europe, in the heart of Luxembourg,  
in the heart of all Luxembourgers

**INOWAI**  
PROPERTY PARTNERS

**Fathia Hamidi**  
fhamidi@inowai.com  
**Jean-Marie In**  
jmin@inowai.com  
T +352 26 43 07 07  
[www.inowai.com](http://www.inowai.com)

**CBRE**

**Guillaume Pellegrino**  
guillaume.pellegrino@cbre.com  
T +352 26 26 12 31  
**Audrey Chantereau**  
audrey.chantereau@cbre.com  
T +352 26 26 12 05  
[cbre.lu](http://cbre.lu)

**Foster + Partners**

**TETRA KAYSER**  
ASSOCIES SA