

RETAIL UNIT

06

# ROYAL · HAMILIUS

LONG FACADE GROUND FLOOR	25 m	TOTAL SURFACE	341.99 m <sup>2</sup>
--------------------------	------	---------------	-----------------------



EXTERIOR VIEW - GROUND FLOOR

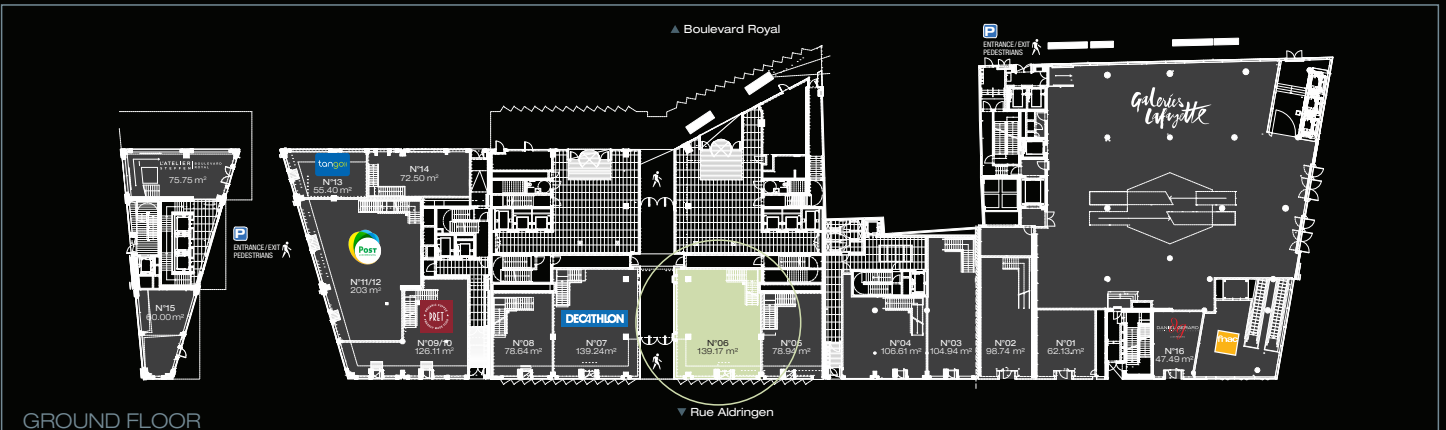


INTERIOR VIEW - GROUND FLOOR

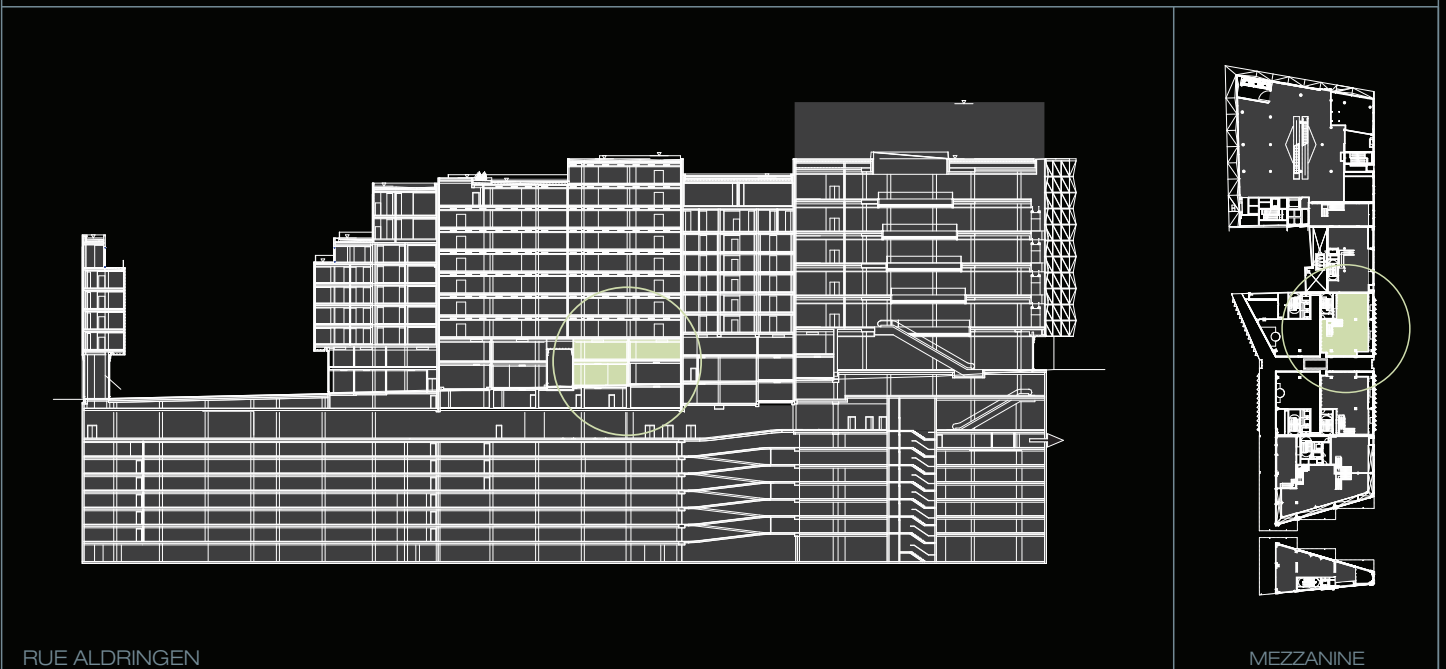


INTERIOR VIEW - GROUND FLOOR

© Photo-Virgani.lu



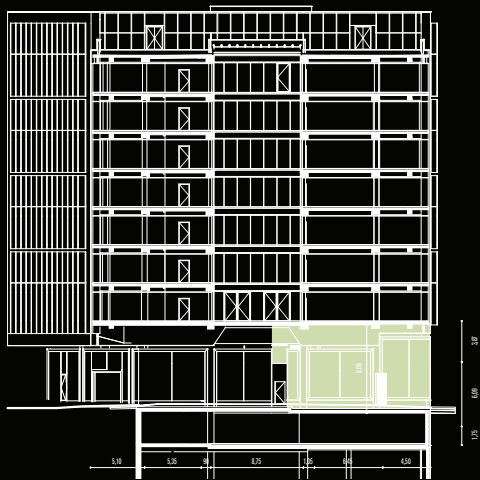
GROUND FLOOR



RUE ALDRINGEN

MEZZANINE

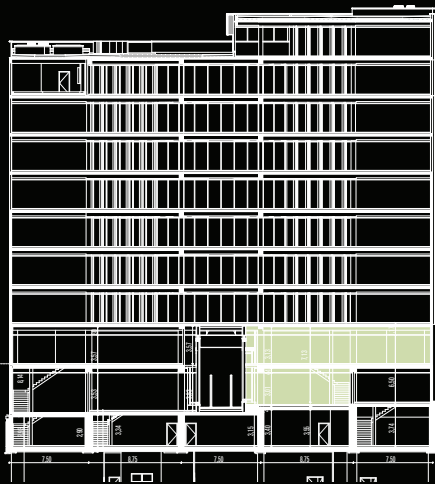




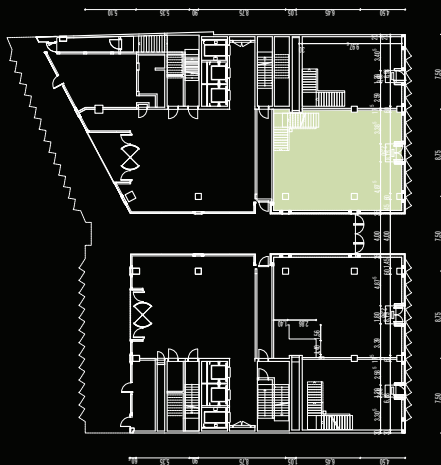
TRANSVERSAL SECTION



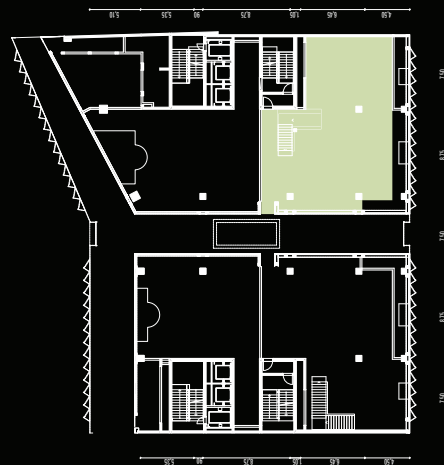
ELEVATION OF THE EAST FAÇADE



LONGITUDINAL SECTION



GROUND FLOOR



MEZZANINE / LEVEL 01



In the heart of Europe, in the heart of Luxembourg,  
in the heart of all Luxembourgers

**INOWAI**  
PROPERTY PARTNERS

**Fathia Hamidi**  
fhamidi@inowai.com  
**Jean-Marie In**  
jmin@inowai.com  
T +352 26 43 07 07  
[www.inowai.com](http://www.inowai.com)

**CBRE**

**Guillaume Pellegrino**  
guillaume.pellegrino@cbre.com  
T +352 26 26 12 31  
**Audrey Chantereau**  
audrey.chantereau@cbre.com  
T +352 26 26 12 05  
[cbre.lu](http://cbre.lu)

**Foster + Partners**

**TETRA KAYSER**  
ASSOCIES SA