

ROYAL · HAMILIUS

LONG FACADE GROUND FLOOR | 8.75 m | TOTAL SURFACE | 62.13 m²

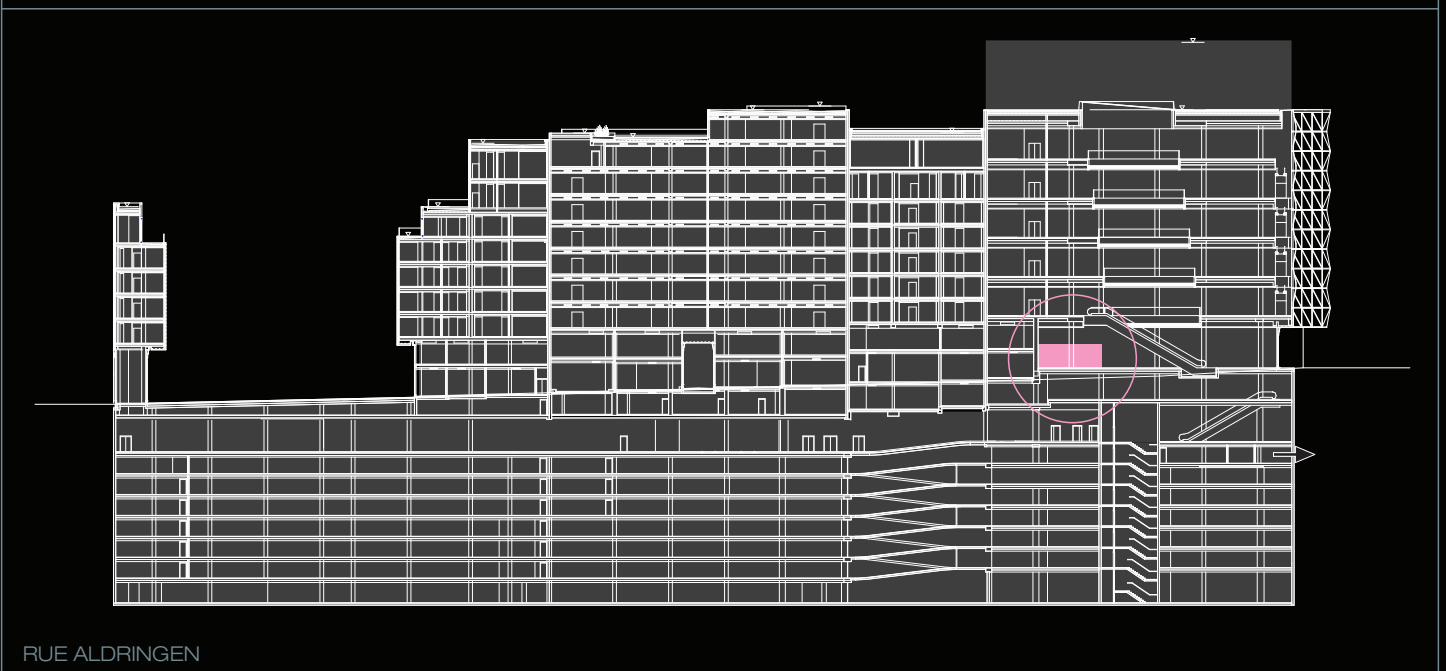
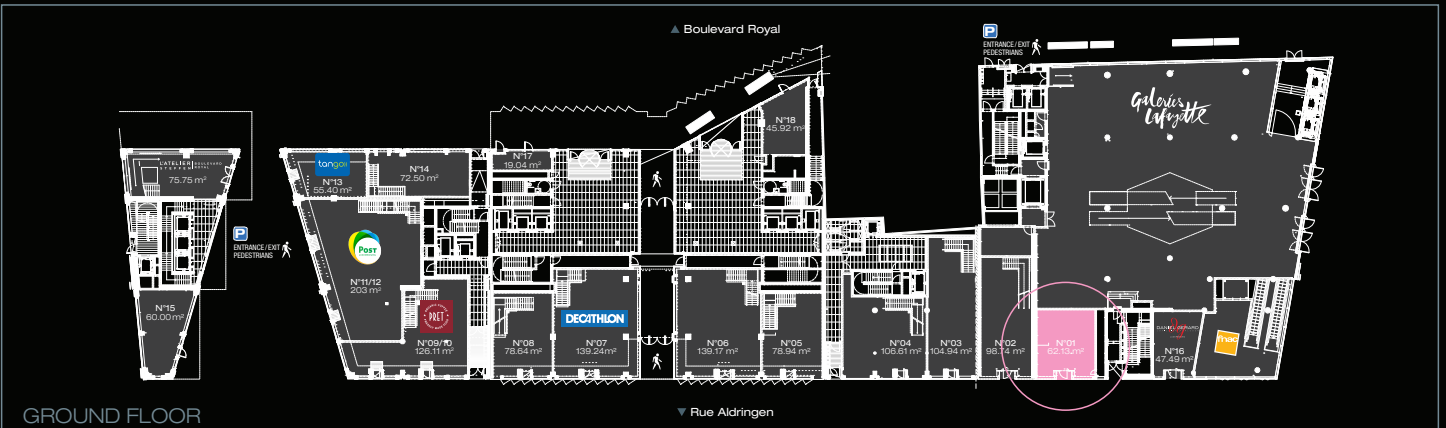


EXTERIOR VIEW - GROUND FLOOR



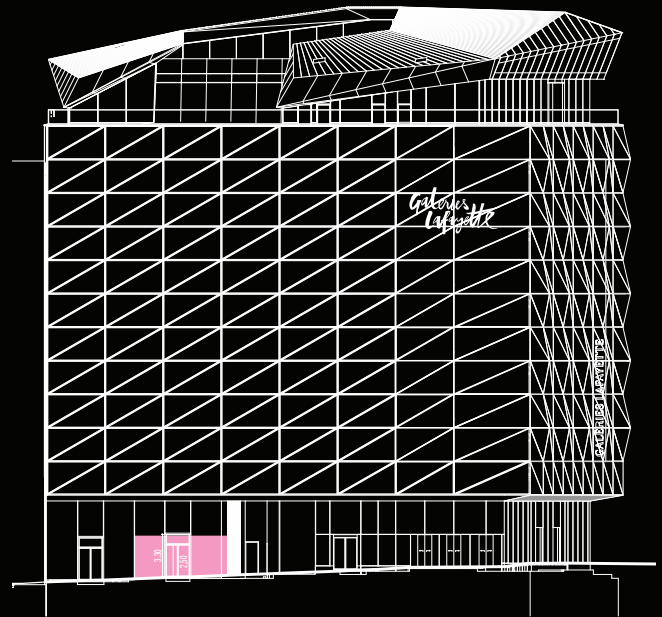
INTERIOR VIEW - GROUND FLOOR

© Photo-Virgani.lu

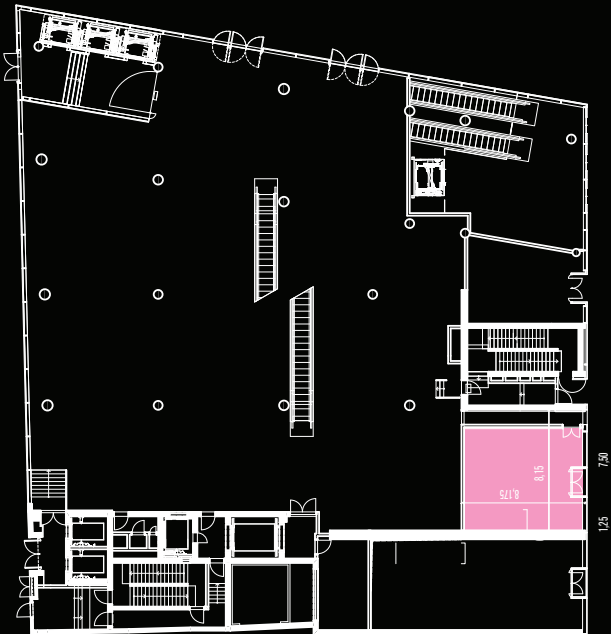




TRANSVERSAL SECTION



ELEVATION OF THE EAST FAÇADE



GROUND FLOOR



In the heart of Europe, in the heart of Luxembourg,
in the heart of all Luxembourgers

INOWAI
PROPERTY PARTNERS

Fathia Hamidi
fhamidi@inowai.com
Jean-Marie In
jmin@inowai.com
T +352 26 43 07 07
www.inowai.com

CBRE

Guillaume Pellegrino
guillaume.pellegrino@cbre.com
T +352 26 26 12 31
Audrey Chantereau
audrey.chantereau@cbre.com
T +352 26 26 12 05
cbre.lu

Foster + Partners

TETRA KAYSER
ASSOCIES SA